



The Messenger

Building Healthy Sanghas: Embracing Generosity & Openness

Calendar of Events

May 2024

04 Sat 9:00 - 11:00 am E-Waste Recycling
05 Sun 9:00 am Sunday Service
05 Sun 10:00 am Ko Discussion Group
11 Sat. Last day to bring flowers to the columbarium
12 Sun 9:00 am Sunday Service
17 Fri. Flowers must be removed from the columbarium
18-24 Sat. - Fri. Columbarium closed for fumigation
19 Sun 9:00 am Sunday Service
19 Sun 10:00 am WHM Board Meeting
20-23 Mon. - Thurs. Temple closed for fumigation
20-26 Mon. - Sun. Office closed for fumigation
26 Sun 9:00 am Gotan-E Service

June 2024

02 9:00 am Temple clean up - NO Sunday Service
02 Sun noon - 1:30 Public Bon Dance Practice
04 Tues 7:00 pm - 8:30 pm Public Bon Dance Practice
09 Sun 9:00 am Sunday Service
09 Sun noon - 1:30 Public Bon Dance Practice
11 Tues 7:00 pm - 8:30 pm Public Bon Dance Practice
15 Sat 6:00 pm Hatsubon Service
16 Sun 9:00 am NO Sunday Service - Chochin Set Up
16 Sun noon - 1:30 Public Bon Dance Practice
18 Tues 7:00 pm - 8:30 pm Public Bon Dance Practice
21-22 Fri. - Sat. 6:00 pm - 10:00 pm Bon Dance
23 Sun 8:00 am Bon Dance Clean Up
30 Sun 9:00 am Sunday Service

Happy Hanamatsuri!

It was wonderful to see everyone at our Hanamatsuri Service on April 7th. Thank you to Helen Akagi, Judi Kakazu, Doris Matsuoka, Vivian Murayama, Karen Pang and Joyce Shimokusu for the beautiful flowers and greenery for our hanamido.

A big mahalo to Vivian Murayama, Karen Pang and Takako Hashimoto for a great hanamido decorating job.

Those who attended the service were treated to a beautiful and delicious apple rose puff pastry made by Vivian Murayama and Karen Pang.



Minister's Message - Amida Buddha is Always with Me



I would like to share the article written by Mr. Takahisa Kanai.

“Although I forget about the Buddha from time to time, the Buddha never forgets about me.”

This quote shows how we are all the time, buried in the secular world. When I listen to the Buddhist teaching, I feel that I am in the midst of the teaching, but when I return to the reality of everyday life, the teaching seems to go somewhere.

Simply said, there is a dualistic type of thinking that Buddhist teaching is the Buddhist teaching and everyday life is everyday life. A person who had come to a temple said, “I like coming to the temple. It feels to me like it cleans my mind and heart. But when I return to the routine of my everyday life, I once again become brutal and mean.” The reason for this thought is that people going to the temple to hear the teaching is a place to escape from their lives.

I believe that there are many people who feel this way, that the Buddhist teaching is for things involving the teaching only and everyday life is for things involving everyday life only. So, they adeptly decide and divide everything in this manner. I feel that no matter how much I would hear the Buddha's teaching, if I were to listen in this manner, it would never become the reliable foundation upon which I could base my life.

An acquaintance of mine who had resided in the United States for a long period and graduated from an American university taught me the term “Nightstand Buddhist.” This refers to people who maintain an occupation in society during the day, then in the bed at night read the Buddhist scriptures. When the morning comes again, they return to the harsh conditions of their workplace. It is a term that really makes you think. No matter where I may be, I am who I am. Even when I am at work or listening to the Buddhist teaching, I am who I am. I am not someone else. No matter where I may be, I want to encounter the Truth teaching that penetrates my being.

When I read this article, I remembered Shinran Shonin's poem.

“When we say Namu-Amida-Butsu, the earth-goddess called firmness reveres and protect us constantly, day and night, accompanying us always just as shadows do things.”

The Amida Buddha is always with me no matter how I change. That is why I can feel the Buddha when I relook at the Buddha.

We are getting old, but we should remember that someone is always with us. That is Amida Buddha. Amida Buddha's compassion to us never changed.

Namu Amida Butsu

In Gassho,

Reverend Kojun Hashimoto

Wahiawa Hongwanji Mission 808-622-4320

Office Hours Monday- Thursday, and Saturday from 9:00am - Noon

www.wahiawashinbuddhists.org

Columbarium Hours: Daily 10:00am - 3:00pm

Mother's Day - Memorial Day - Father's Day

We are currently experiencing a volunteer shortage. If you plan to bring a flower offering, we kindly ask that you come back in a week's time to remove your flowers and wash the vase. If you are able to volunteer, volunteers meet on Saturday mornings at 8:00 am.

Thank you for your cooperation and understanding.

President's Report



The first weekend in April was hectic. On Friday, April 5th, leaders from both Honolulu and Oahu Districts had a potluck dinner at Aiea Hongwanji to get together and share ideas about challenges and what temples were doing about them.

Many temples shared similar challenges in terms of decreasing membership and aging resources. The need for sharing resources between temples and leveraging common contracts for services was discussed. Norman Fujioka, Carolyn Uchiyama, and Rod Moriyama represented Wahiawa/ Waiialua Hongwanji.

- Many temples had to make difficult decisions on closing services like daycare facilities for adults and pre-K schools for young children. Rising costs and competition forced these closings.
- Services that were thriving were the Hongwanji Mission School, Pearl City's Alternative Care Services, and Aiea's Day Care Services.
- Investing in upgrading facilities to attract outside services is where the focus was being made.
- Rebranding the use of "Hongwanji" was also actively discussed.

The following day, the Buddhist Study Center (BSC) held its first April Spring festival. It was a very good effort to attract outsiders to the BSC. There were Taiko performances by the Pacific Buddhist Academy, Koto and Shakuhachi performances by the Shakuhachi Club and the University of Hawaii's Music Department's Koto Class.

Between performances, workshops on Caregiving, a Healthy Cooking Class on Root Vegetables by Carolyn Uchiyama, and Composting were held. There were several "booths" set up for people to come by to discuss Buddhism, Youth programs, Palliative Care, and buying books for children and adults.

On Sunday, April 7th, Wahiawa held its Happy Buddha Day "Hanamatsuri" Service. It was well-attended and well-received. The "Hanamido" decorated by Amy Kanemaru, Vivian Murayama, Karen Pang and Takako Hashimoto was especially beautiful.

In Honolulu's Soto Mission on Nuuanu, the Hanamatsuri Service was held for all Buddhist sects on Oahu. There were many ministers, Bishops, and members attending from all over the island. It was wonderful to see so many enthusiastic followers and young people enjoy the service and pouring of "sweet tea" over the baby Buddha and their "Hanamido."

On Friday, April 12th, the Leeward Community College "Value Added Product Development Center" held its grand opening and Open House. Because it is next door to us, it is hoped that we can form better partnerships as part of the community.

If you haven't signed up to volunteer at our Obon Festival on June 21 and 22 and help to set up during June, please do so! Thank you!

In gassho (gratitude),



Rodney S. Moriyama, President

2024 WHM Board of Trustees

President Rod Moriyama

Rev. Kojun Hashimoto

Vice Presidents (in alphabetical order): Karen Pang, Dale Shimaura, Carolyn Uchiyama

Treasurer Gaylen Yonamine

Assistant Treasurer Vivian Murayama

Secretary Amy Kanemaru

Past President Glenn Hamamura

Trustees (in alphabetical order): Charlene Acohido, Norman Fujioka, Jan Fukada, Brian Fukuhara, Lillian Lee, Mavis Nakabayashi, Joy Okimoto, Denise Okouchi, Marcus Oshiro, Venus Oshiro



Help Needed for Yagura Set Up SATURDAY, June 8th at 8:00 am

If you are able to help, please call the WHM office at 808-622-4320 or email amy.kanemaru@wahiawahongwanji.org

Bon Dance Volunteers Needed

Planning is underway for Obon 2024! We'll need everyone's help to make this year's bon dance a success. Please volunteer to help from home or in person!

Volunteer from home by making items to sell in our country store or volunteer in person for set up, working in one of our bon dance booths or on our break down day. The more the merrier!

If you are interested in volunteering, please call the WHM office to leave a message at 808-622-4320 (please allow 48 hours for calls to be returned) or sign up at <https://bit.ly/WHMobon> or using the QR to the right.



Calling all Crafters and Bakers Please donate to our Bon Dance Country Store



We are seeking donations of:

- scrubbies dish towels kitchen towels hot pads or pot holders
- gently used happi coats, yukata and kimono Other handmade craft items for the home

We are also seeking donation of baked goods, produce and flowers such as:

- brownies cookies mochi dessert bars snack mixes jams or jellies
- cut flowers fresh fruits fresh vegetables



If you are able to donate, please email janfukada@gmail.com or leave a message at 808-622-4320.

You may drop off non perishables, jams and/or jelly donations on Mondays - Thursdays & Saturdays from 9:00 am - noon from now until 6/15. Please include your name and phone number, and label your donation "Country Store"

Please drop off perishable food donations on Fri., June 21st and/or Sat. June 22nd at the temple office from 9:00am - noon. Please include your name and phone number, and label your donation "Country Store". Please also include a list of the ingredients (from greatest to least) with your donation if it has 2 or more ingredients.

WHM Calligraphy & Japanese Classes

Sunday	8:00am-8:40am	Calligraphy
Monday	9:00am-10:00am	Easy Reading, Writing and Conversational Japanese for traveling to Japan
Wednesday	6:00pm-7:00pm	Conversational Japanese

Cost: One session of 5 classes

Wahiawa Hongwanji Member \$25.00

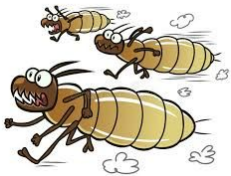
Non Wahiawa Hongwanji Member \$37.50

If you are interested in registering for classes or have any questions, please call the WHM Office at 808-622-4320 and leave a message for Takako Hashimoto



Sound Bath

On March 19th, WHM was the site of soothing sounds that relieve stress, improve sleep, and enhance emotional well-being. A morning of self-care was a great way to begin the day!



FINAL STEP IN THE ERADICATION OF TERMITES AT WHM

By Dale Shimaura



Hoala School and the Social Hall were treated for ground termite in December 2023. That was followed by termite tent fumigation of the school, social hall and kitchen in March 2024. The last phase will be the tenting of the temple, office, BWA room, Columbarium and the Minister's residence.

Considered a "big job" by the termite company, this last phase will take place over 3-days: Monday (May 20), Tuesday, (May 21) and Wednesday (May 22). Please check below for closure dates of the temple, office and columbarium during this termite treatment period.

- TEMPLE will be closed from Monday, May 20. Will reopen on Friday, May 24.
- COLUMBARIUM will be closed from Saturday, May 18. Will reopen on Saturday, May 25. Last day for bringing flowers will be on Saturday, May 11. All flowers must be removed from the Columbarium by Friday, May 17.
- OFFICE will be closed from Monday, May 20. Will reopen on Monday, May 27.

Total cost for this entire project: \$75,869.08.

Next project that will be undertaken will be the reroofing of the Bonsho Bell Tower. Cost estimated to be between \$11,000.00-\$14,000.00.



WAHIAWA HONGWANJI GOING GREEN DAY #260 E-WASTE RECYCLING MAY 4, 2024

9:00-11:00 AM - 1067 California Ave.

Everyone Welcome- Business, Schools

Acceptable Items

- Computers, printers, scanners – no limit
- TVs - no limit
- HI-5 beverage containers
- Batteries, AUTO & LEAD ACID ONLY
- Canned goods
- Gently used clothing ONLY
- Used eye glasses and hearing aids
- Diapers and wipes for keiki & kupuna
- For pets - towels, blankets, food
- Free towing of unwanted cars, call 291-6151



T&N
Computer Recycling Services.



Association of Hawai'i



“Where there's a
need, there's a Lion”



SOARES TRUCK RENTAL

SORRY, WE CANNOT ACCEPT: METAL, TIRES, PAINT, MICROWAVE OVENS, COOKING OIL, MOTOR OIL, INK CARTRIDGES, TONERS, HAZARDOUS FLUIDS, CARDBOARD, PAPER, PLASTICS, WOOD, AND BULKY ITEMS. NO HOUSEHOLD ITEMS, ONLY CLOTHING.

For questions contact: **Rene Mansho @ 291-6151 / renemansho@hawaii.rr.com**

Mahalo for recycling from the WAHIAWA HONGWANJI MISSION OHANA!

