



The Messenger

Building Healthy Sanghas: Embracing Generosity & Openness

Calendar of Events

February

07 Sun 9:00-10:00am Food Drive

07 Sun Sangha Day registration due to <https://sites.google.com/view/sangha-day-2021/home>

07 Sun 9:00am Online (Zoom) Dharma Message by Rev. Hashimoto

14 Sun 9:00am Online (YouTube) Dharma Message by Rev. Hashimoto

11-13 Thurs-Sat ONLINE Legislative Assembly (Giseikai)

21 Sun 9:00am Online (Zoom) Pet Memorial Service

28 Sun 9:00am Online (YouTube) Dharma Message by Rev. Hashimoto

28 Sun 11:00am -12:00pm Drive By Kyodan New Year's Celebration and Keirokai

March

07 Sun 9:00am - 12:00pm ONLINE Sangha Day (see last page for more information)

14 Sun 9:00am Online (YouTube) Dharma Message by Rev. Hashimoto

14 Sun 9:00-10:00am Food Drive

21 Sun 9:00am Online (Zoom) Dharma Message by Rev. Hashimoto

27 Sat 9:00am ONLINE Spring Nembutsu Seminar with Bishop Marvin Harada

28 Sun 9:00am Online (YouTube) Dharma Message by Rev. Hashimoto

Online Dharma Messages and Services

Links to weekly online Sunday Dharma Messages can be found at our website



YouTube

<https://www.wahiawashinbuddhists.org/> or you can view them on YouTube at your convenience. In addition, Wahiawa Hongwanji Mission is also offering major, important and special services online. Please check our calendar of events and our

website for links to these services. If you have any questions, please call the temple office at (808) 622-4320.

WHM Online Pet Memorial Service Sunday, February 21st at 9:00AM



Please join us on Zoom for our Pet Memorial Service. Please see our website, <https://www.wahiawashinbuddhists.org/> for the Zoom link for this service. If you would like your departed pet's photo and name included in this service, please email your pet's name and photo to Rev. Hashimoto at hashimoto@wahiawahongwanji.org by February 15th.

NEW YEAR'S GREETINGS FROM HIS EMINENCE GOMONSHU KOJUN OHTANI

Happy New Year, everyone! At the beginning of this New Year, I would like to extend my best regards to you all.

Throughout the last year, the world suffered from the pandemic of COVID-19, which brought tremendous hardship to many people, and we still are not able to see when normalcy would return to our world. On this occasion, I would like to offer my deepest condolences to those who fell victim to the disease and express my sympathies to those who are currently undergoing treatment.

Meanwhile in the US, the media has widely reported systematic discrimination against African-Americans, social unrest and division among the general public brought on by the presidential election. It concerns me that many people have been left isolated in the midst of hardship.

'Dependent origination' is a universal truth that Buddha Sakyamuni presented. This fundamental Buddhist principle expresses that every thing, matter, and phenomenon arises from various causes and conditions. None of us lives by ourselves. We are living while being interconnected and mutually supported by one another. Considering the reality of a divided society, it is important that everyone deeply reflects on the principle of Dependent Origination that represents the true state of the world.

Even though having been introduced to the truth by Buddha Sakyamuni, ordinary people like us are still not able to accept it as it is. Therefore, to guide us to cope with the suffering caused by our own ignorance, Shinran Shonin clarifies Amida Buddha's compassion that always embraces us all. When the world is facing this unimaginable crisis, it is crucial that each of us experiences Amida Buddha's great compassion ourselves, and live each day to the utmost, having that joy and sensation in our hearts as the basis of our life.

I have been told that in this difficult time and situation, many of your sangha have been adopting new measures for sharing the Jodo Shinshu teaching that had not been previously considered. I find such efforts truly reassuring. It is my hope that your temples will continue serving as your spiritual home, and Honpa Hongwanji Mission of Hawaii HEADQUARTERS UPDATE 1727 Pali Highway, Honolulu, Hawaii 96813 Phone: (808) 522-9200 Fax: (808) 522-9209 Web: www.hongwanjihawaii.com Email: hqs@honpahi.org 2 therefore, I sincerely ask for your understanding and cooperation to allow them to be so. With my heartfelt appreciation for each one of you, I would like to conclude my new year's greeting.

January 1, 2021

OHTANI Kojun
Monshu
Jodo Shinshu Hongwanji-ha



Bishop's Message

Nurtured by Amida Buddha's Light of Wisdom and Compassion

Our Honpa Hongwanji Mission of Hawaii Theme & Slogan for 2021 is "Building Healthy Sanghas: Nurturing Empathy and Respect." It is a timely slogan especially as we begin a new year. When we take a moment to reflect on the situation of our nation and our society with the Coronavirus Pandemic, racial discrimination and even the climatic changes that are occurring on a global scale, it is not hard to see what our world needs is more respect and empathy.

The Larger Sutra provides wise counsel "People in the world...should truly respect and love each other, refraining from hatred and envy. They should share things with others, refraining from greed and miserliness. They should always be friendly in speech and expression, refraining from quarrel and dispute."

Unfortunately, it laments, "...people in the world...do not believe that performing good deeds brings good results, or that seeking the Way leads them to attaining it."

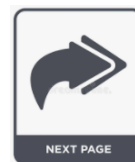
However, all is not lost in that the Great Compassionate Light of Amida Buddha illuminates, nurtures and unconditionally embraces the spiritually foolish being who cannot completely break free from blind passions and attain enlightenment on one's own. In the Larger Sutra it says "Sentient beings who encounter this light have the three defilements swept away, and they become soft and gentle in body and mind. They leap and dance with joy, and the good mind arises in them. When those suffering pain and travail in the three evil realms see this light, they all find respite and become free of afflictions. After their lives have ended, they will all gain emancipation." Thus, I believe, the late Jodo Shinshu Scholar Rev. Jitsuen Kakehashi was able to say, "When we look at the world with an ordinary mind, it is distinctly divided into things we love and things we hate, but with the mind of the Tathagata, we are made to know that everyone is equally the Tathagata's indispensably important child. From that standpoint, we realize that we are all brothers and sisters and fellow human beings. Then slowly but steadily, we come to reflect on our self-centered thoughts, reject our blind passions and make efforts to see things and live our lives in a way that can be approved by the Tathagata." In this way, thanks to the Working of Other Power, we begin to slowly live in a new awareness and are assured the attainment of Enlightenment at the end of this finite life with our birth in the Pure Land.

His Eminence Gomonshu Kojun Ohtani says, "By listening to the Primal Vow and how it was established by Amida Tathagata, we are enabled to become conscious of our own ignorance and self-oriented inclinations, and through such awareness, we naturally become gentle in word and deed in our efforts of minimizing our egoistic way of thinking." "Even though our efforts may pale in comparison to the Buddha's Compassion, we are at least guided in the proper direction by the Buddha Dharma." Let us take to heart his words.

To conclude, I would like to share His Eminence's "Our Pledge." The original was written in Japanese and his expressed wish was that it be translated by each locale in a way that would resonate with the people of that region. Thus, this is Hawaii's Version (which can also be sung as it has also been put to music by BJ Soriano). In a few short verses, it captures the essence of a healthy Hongwanji Sangha which recites 4 the Nembutsu in awareness, joy and gratitude of Great Wisdom and Compassion, and emphasizes respect and empathy.

Our Pledge Reaching out to others,
I will share a smile and gentle words.
Just like the Buddha, who always calls out with Aloha.

Breaking away from my greed, anger and ignorance,
I will try to live in peace and harmony.
Just like the Buddha, who shares tranquility and kindness with all.



Moving forward from self-centeredness,
I will share a life of joy and sorrow with others.
Just like the Buddha, whose caring heart always embraces us.

Realizing that I live because of others,
I will strive to live life to the fullest with an attitude of gratitude.
Just like the Buddha, who promises to embrace us all.

Thank you, Happy New Year and Namu Amida Butsu.

In gassho/anjali,
Eric Matsumoto, Bishop

Honpa Hongwanji of Hawaii President's Message



Happy New Year! Akemashite Omedetou Gozaimasu! Hauoli Makahiki Hou!

I hope that you and your loved ones are healthy and in good spirits as we enter the New Year. The year 2020 was a year to remember, mostly from the effect that the COVID-19 pandemic had on all of us. We experienced lockdowns, isolation from family and friends, and job loss or insecurity. And most difficult of all, some of us lost family or friends to the COVID-19 pandemic.

If you have kept up with the news, you know that there is a very good chance that 2 or 3 pharmaceutical companies will have vaccines available for the Coronavirus before the end of this year. The good news is that the first two vaccines appear to be very effective in preventing COVID-19 disease. Also, you can be sure that the FDA is looking very carefully at the safety profile for each vaccine. As vaccine availability increases, there is good reason to believe that we may be looking at an optimistic scenario of returning to a more “normal” lifestyle by the summer or fall of next 2021. Let’s hope that the vaccines continue to show effectiveness with a good safety profile and that enough people will step up and get vaccinated!

Through the difficult times caused by the COVID-19 pandemic, our collective Sangha responded by sewing masks for others, helping with daily chores such as shopping or cleaning, sharing meals, delivering produce, and by calling or messaging others. Ministers shared the Dharma through YouTube, Facebook and other electronic media. Small in-person services were held as permitted by law in spite of the risk to our ministers’ health.

Our actions through this pandemic confirms that our Sangha is vibrant, caring and compassionate. Although we were separated physically, we connected with others through individual and collective acts of kindness.

As we look forward to the New Year of 2021, let us reflect upon what we are grateful for-life, family, friends and a supportive community. Let us wake up each morning grateful for Amida Buddha’s Compassion, which surrounds each one of us.

“Happiness does not depend on what you have or who you are; it solely relies on what you think.”

-Buddha

With Gassho,
Warren Tamamoto MD
President, Honpa Hongwanji Mission of Hawaii

Minister's Message

Link



"I am a link in Amida Buddha's golden chain of love that stretches around the world."

We used to recite this "Golden Chain of Love" every Sunday. When I first read this sentence and although I've always felt a connection while reciting this sutra, since the pandemic and not being able to attend service due to Covid-19 precautions, I feel as if that connection has grown stronger in many ways. Through the difficulty of figuring out the methods of social media such as Zoom, YouTube, and Facebook, it was of great importance for me to find a way we could connect with each other and to reconnect our sangha.

"Don't seek what is wanted, just find content in what is available." In difficult situations that are out of our control, I think of these words. We in some way can use technology, and although it is not as fulfilling as face to face interaction it is a way to reconnect.

The new year has started, but there is still difficulty in the rapidly changing environment. In hopes for better communication and much discussion, I established a new method that could direct information on events and access weekly Sunday video uploads to temple members. It is called the "Wahiawa Hongwanji Line Group." Using the LINE app, which is a very well known and efficient communication system. I personally use it all the time as well for news and contact with family. If you install the "**LINE App**" into your cell phone, you can get the temple's information in your cell phone immediately when the message is sent.

There are only some quick and simple steps. First, your phone needs to be connected to the internet by wifi or mobile internet. Then search "Line Download" which also guides to the download link. After the option of "Go to download." click "Download" from there, there are simple instructions to follow.

After successfully downloading the app, all there's left is to scan the QR code below with your cell phone's camera. The link to the group will pop up on the top of your screen. When you receive the welcome message from Wahiawa Hongwanji, you have joined the temple group line successfully. Although it may sound like a long process it only takes 4-5 minutes so please give it a try and enjoy our new communication system.

In Gassho,



Reverend Kojun Hashimoto



Altar Flowers Needed

Every Saturday flowers are needed for our altar. If you are able to donate flowers for our altar, please call the office at 622-4320 or email hashimoto@wahiawahongwanji.org to arrange pick up or drop off.

Wahiawa Hongwanji Mission Office Hours: By appointment 808-622-4320
NEW Columbarium Hours: Daily 10:00am - 3:00pm

President: Rod Moriyama
Minister: Reverend Kojun Hashimoto
Vice Presidents: Karen Pang, Dale Shimauro, Carolyn Uchiyama
Treasurer: Alan Kakazu
Assistant Treasurer: Vivian Murayama
Secretary: Amy Kanemaru
Assistant Secretary: Wendy Fukuhara

Board of Trustees:
Charlene Acohido
Brian Fukuhara
Elaine Kawamoto
Brian Kimura
Barbara Ladao
Jackie Nakamura
Jack Tsujihara

President's Report

Happy New Year!! As I write this month's report, I am hearing in the background the violence, disruption, and threat to our democracy that occurred on January 6th with the confirmation of our new President. I strongly urge that conversations take place with your children and grandchildren as they are forming their own opinions, viewing all of this violence on the screens and social media. Here is a site to learn how to have that discussion: [Talking to Kids About the Attack on the Capitol | NEA](#)

As we rang in the New Year on December 31st, it dawned on me how important people-to-people connections are in society. It was such a joy to see faces we haven't seen in so many months and being startled at the growth of our younger generation. We have a set of young people in high school and college, and a new set of younger grade school children. Our challenge is to make Wahiawa Hongwanji a place of relevance and joy for them, especially during these stressful times.



Our Buddhist teachings are so in line with societal problems. Continuous learning, understanding each other, acting with kindness and gratitude sounds so fundamental and yet so difficult to practice when faced with such adversity. Our challenge this year, as we transition out of the pandemic and get vaccinated, and embrace a new America that is more united, is to continue to practice the teachings for ourselves and our families. Curing everyone else is not the goal. Understanding ourselves and making ourselves better aligned with the teachings will promote all that we stand for.

At our General Membership meeting, we reviewed 2020 in a slide presentation virtually. We re-elected the same members of the board and the following officers: Rod Moriyama, President; Vice Presidents, Karen Pang, Dale Shimauro, and Carolyn Uchiyama; Treasurer, Alan Kakazu, Assistant Treasurer, Vivian Murayama; Secretary, Amy Kanemaru, Assistant Secretary, Wendy Fukuhara; Past President, Glenn Hamamura.

Keep those calls and emails coming with suggestions on how we can continue to promote getting together safely both in-person and virtually! Thank you again to all the volunteers and Board members who have committed to serving this year!

In gassho (gratitude),

A handwritten signature in cursive script, reading "Rod Moriyama".

Rodney S. Moriyama, President

2021 WHM Board of Trustees

The 2021 WHM Board of Trustees were installed online on January 3rd. This year's board members are:

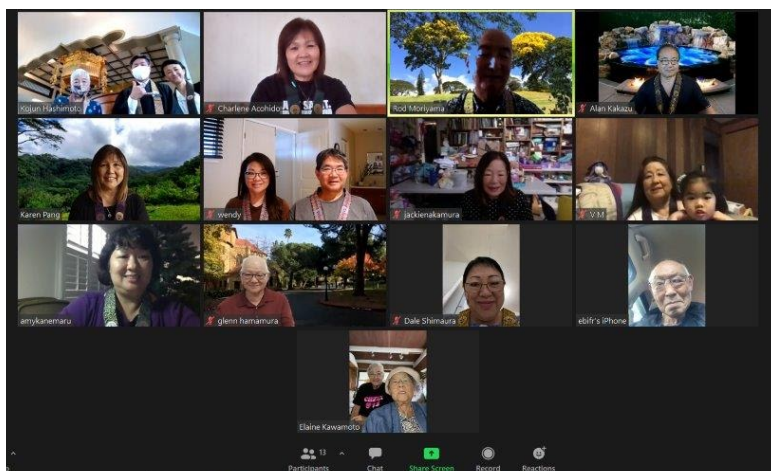
Row 1: Carolyn Uchiyama, Rev. K. Hashimoto, Charlene Acohido, Rod Moriyama, Alan Kakazu

Row 2: Karen Pang, Wendy Fukuhara, Brian Fukuhara, Jackie Nakamura, Vivian Murayama

Row 3: Amy Kanemaru, Glenn Hamamura, Dale Shimauro, Jack Tsujihara

Row 4: Barbara Ladao, Elaine Kawamoto

Not pictured: Brian Kimura



Food Drive for Our Wahiawa

By Carolyn Uchiyama

Happy New Year! The challenges of COVID-19 continue into 2021. There is a light at the end of this long, dark tunnel. The vaccinations for COVID-19 began and hopefully by this summer everyone will be vaccinated. With this new hope on the horizon, we feel that people's needs in Our Wahiawa will be diminished and we could move into Tier 3.

On January 3rd, the Food Drive collected **156** items of food and **25** pounds of rice. Every little bit helps to feed our struggling neighbors. Since its inception in June of 2020, your donations amounted to **1,529** items of food and **185** pounds of rice.

Thank you for your continuous support in Wahiawa Hongwanji's contribution to St. Stephen's Episcopal Church's efforts to provide hot meals and food during this unprecedented time in our history. They are providing meals and food on the 2nd and 4th Wednesdays of the month.

Our next Food Drive will be on February 7th from 9:00 am. Until then keep safe and healthy.



Every
Donation
Makes A
Difference

WHM NEW YEAR CELEBRATION & KEIROKAI

Mark your calendars for SUNDAY, FEBRUARY 28, 2021, as we celebrate our ANNUAL WHM NEW YEAR CELEBRATION & KEIROKAI.



Though unable to "party" in the usual fashion, you will get to meet and greet our temple Board members, and also congratulate our keirosha for this year (from a safe distance, of course!), as you drive through our bento pick-up line at the temple between 11-12pm.

There will be 3 bentos to choose from. An order form has been included. Deadline for turning in the order form and payment to the office is 12noon on Monday, February 22, 2021.

We hope you all come down to the temple on 2/28 to say "hi," and when you get home, take pictures of your family enjoying lunch together. We kindly ask that you email these pictures to: dshimaura@yahoo.com so we can share with others.

We also need your help in identifying all those born in 1945, who turned 75years old in 2020. Please call names into the office (622-4320) as soon as possible.

Wahiawa Kendo Club Thank You

Our yearly fundraiser of Zippy's ticket sale has now ended. We are very thankful for your support in this difficult time to sell and buy tickets for our club. This raised funds not only cover our club expenses but we also use them to promote kendo in Hawaii, such as hosting Children's tournament, Seminars and subsidizing out of town tournament participants and so forth.



Iwao Sato

Chief Instructor, Wahiawa Kendo Club
Club website - www.wahiawakendoclub.com

WHM On-Going Clothing Drive Fundraiser

By Dale Shimaura

Thank-you to all who have been cleaning and then contributing all of your clothing, shoes, purses, towels, linen, bed spreads, blankets, jackets, curtains, etc. to our Clothing Drive Fundraiser. We still have lots of space for your gently used items. We especially appreciate those heavy items as we will be paid by weight.

Leave your tied bags of clothing under the tables in front of the Columbarium. Please put your name/phone number on a piece of paper in one of your bags.

2021 A Drive By WHM New Year and Keirokai Celebration
February 28, 2021, 11:00 am – 12:00 pm

BENTO #1 (Nishime Bento) \$10.00
(White Rice, Vegetable Nishime, Sweet Potato Tempura, Cucumber Namasu, Toss Salad)

BENTO #2 (Summer Roll Bento) \$11.00
(Maki Sushi/Takuan Teppo, Thai Summer Roll, Cucumber Namasu, Toss Salad)

BENTO #3 (2-Meat Bento) \$12.00
(White Rice, Baked Boneless Garlic Chicken, Teriyaki Pork, Shoyu Long Rice, Cucumber Namasu, Toss Salad)

Bento Order Form

Name: _____
Last First

Phone Number:

of Bentos

\$ Totals

Bento #1: x \$10.00 ea = \$

Bento #2: x \$11.00 ea = \$

Bento #3: x \$12.00 ea = \$

TEMPLE DONATION: \$

TOTAL AMOUNT ENCLOSED: \$

**Mail or drop off the completed order form with your payment by
12:00 noon on Monday, February 22, 2021.**

Wahiawa Hongwanji Mission
1067 California Ave
Wahiawa, HI 96786

Should you have any questions, please call the WHM Office at 622-4320