



The Messenger

Building Healthy Sanghas: Embracing Generosity & Openness

Calendar of Events

November

06 Sat 9:00 am-11:00am 2021 Fall Virtual Nembutsu Seminar

07 Sun 9:00 am Eitaikyo Service

07 Sun 9:30 am - 10:30am Food Drive

14 Sun 9:00 am Sunday Service

14 Sun 10:00 am WHM Board Meeting in Social Hall

21 Sun 9:00 am Sunday Service & Thanksgiving Activity

27 Sun 9:00 am - 11:30am Antiques, Treasures & Treats Sale in WHM Social Hall

28 Sun 9:00 am Sunday Service

28 Sun 9:00 am - 11:30am Antiques, Treasures & Treats Sale in WHM Social Hall

December

05 Sun 9:30 am Hawaii Buddhist Council Bodhi Day - Watch online at WHM or at YouTube Premiere @ Hawaii Buddhist Council's YouTube Channel

05 Sun 9:30 am - 10:30am Food Drive

12 Sun 9:00 am Bodhi Day Service and WHM General Membership Meeting & Elections

19 Sun 9:00 am Sunday Service

26 Sun 9:00 am Sunday Service

There is no need to make a reservation to attend Sunday Service. Please attend!

You Are Invited

*On November 21st,
Come to a Gratitude service at 9 a.m.
honoring those who have aided us
through the COVID-19 crisis.*

*Join us in creating
a Hearts of Gratitude poster
with your thoughtful ideas,
caring and comforting words.*

*We will need many helpful hands
to accomplish this task.
Share in this wonderful experience
that will warm many hearts.*



Minister's Message - Eitaikyo

We will gather for EITAI-KYO service on the 7th of November. 'Ei' means long. 'Tai' means period or generation. 'Kyo' means sutra or teaching. So, EITAIKYO' means we listen to the sutra which has been handed down to us from a long time ago.

Through this service, we learn what our ancestors wanted to tell us in the sutra or the teachings of the Buddha.

Someone said, "Most of Jodo Shinshu's ministers talk about death. Why do they pick such a topic? It is a subject that many of us are not interested in. I do not want to think of such a future."

If we do not want to know our future, we might not need to think of death. But as you know, we are living in a life that is impermanent. We do not know when our last moment will come. The future is not far away, and we always welcome our future from time to time. Moreover, we should learn our future from what our ancestors' left for us.

I would like to introduce the term "Oujo". When a person dies, Jodo Shinshu followers use the Japanese term, "Oujo." However, the term "Oujo" does not mean death or dying. A fuller meaning of "Oujo" would be "to be born into the Pure Land."

"Ou" means an objective, destination, goal, or aim. 'Jo' means to be born. The characters can be interpreted as to be born into a place according to our destination, goal or aim.

Right now, what is our destination? In general, people all have some objective, goal, or aim. We have many different purposes for our life, and we have a common purpose that we share as a Buddhist. That common purpose is **to be born into the Pure Land**. Our purpose is enlightenment. Our goal is being fully awakened.

Basically, we pursue our objectives, and we may attain them one by one. With each attainment, we continue to strive for the next objective, then the next. As we continue to make great strides in attaining our goals, we also find that our objectives may change. If we do not have any objective, we feel anxious and we worry about this life, basically, wondering what is the meaning for my life?

These are important questions that we all have.

Let me explain.

A female patient in her forties who had terminal cancer told her, "I made a good living but have never really lived." She was financially responsible, a conscientious homemaker, ensured that her children were educated, and in all things moderate in her outlook and action. But when she knew she had only a few months left to live, she thought "Did I really live?" "I do not feel that I really lived."

She realizes that she has lost the purpose of her life.

The teachings of the Buddha provide the answer to the questions. The purpose for this life is to cultivate faith that we will be born in the Pure Land.

"When sentient beings, upon hearing the Buddha's name, realize an entrusting heart in joy with sincere mind, and aspire to be born in that land, they all attain birth in that land"

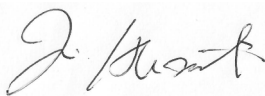
(Quote: The Tree Pure Land Sutra Volume II)

In the Jodo Shinshu teaching, we say Nembutsu "Oujo." "Oujo" does not mean the end of our life. It means that we start our life anew with Nembutsu.

Through this service, we are taught to see our life right now and we begin to awaken to the purpose of our life. Through the teachings of the Buddha, we come to appreciate the lives of our ancestors. We also appreciate our life.

Namo Amida Butsu

In Gassho,

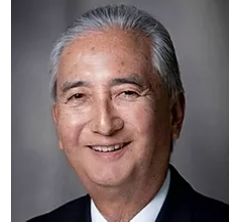


Reverend Kojun Hashimoto



President's Report

As the year draws to a close, there isn't a day where we don't receive a solicitation for some non-profit, school, temple, or hospital. There are specific reasons why people are interested in such requests. They have established a relationship with the institution or a specific goal/project, and they want to be a part of contributing to its purpose and legacy. ***Wahiawa Hongwanji Mission provides spiritual support, religious education, cultural activities, community service, and a place for people to gather as a comfortable welcoming "home."***



Beginning with the Tsuito-E-service on October 3, we ask for help in sustaining the Wahiawa Buddhist Women's Association. During the year, we ask for donations as reminders for Sustaining Gojikai Dues, contributions for major services, donating to our Capital Fund, and finally, our Eitaikyo Endowment Fund where we have set a goal of \$1 Million by 2028. Our Eitaikyo Service is currently scheduled for November 7th. There are many donation strategies that people can participate in. The Annual Giving of at least \$175 is a membership drive that begins at the beginning of the year. Many people chose to give monthly some small amount, like \$20, and just have it accumulate. We will work on automating this process so it is simplified.

Throughout the year we have fundraising events that are accentuated with the Obon Festival, monthly food donations, annual event services, Peace day, and special seminars.

This year, the maintenance of our campus amounted to significant costly projects. We had trimmers come out to clear the overhanging branches and vines that were encroaching on the safety of the buildings. This was \$7000. We also repaired the front portion of the temple with new non-slip tile that cost approximately \$10,000. We will also repair and recoat the cracks in our parking lot for about \$250 for materials. We upgraded the technical and security infrastructure with cameras. These have been used specifically to present to the authorities, pictures of the trespassers who have visited our campus and scattered rubbish/trash both in and just outside the borders. We arranged to have the covered Bus Stop removed to discourage homeless camping. The worn-out pictures of Shonin and Rennyō Shonin in the smaller altars will be replaced for over \$2000.

We are so grateful for the Hosha team who have continued to maintain our grounds even during these pandemic times. The Hashimoto family and volunteers continue to maintain/clean the temple and columbarium so memorial services, funeral services, and regular services can be held.

We have identified some key capital projects over the next 6 years to accomplish by our 120 Anniversary in 2028. If you are interested in being part of identifying and prioritizing these projects, please let us know. Capital Giving Campaigns not only affect our own campus, we are always being asked to help other temples and the Headquarters. Thank you for your consistent and dependable support.

Finally, Endowment Giving (Eitaikyo Fund) provides a way to sustain your legacy after you've passed away. As an example, if \$2000 is given annually for your ongoing contributions, multiplying that amount of money by 25 and designating this amount (\$50,000) in your will, your annual giving will be sustained forever. We have recently had such a gift to insure this person's parents and he were remembered in perpetuity.

Please consider these strategies in helping to sustain the Wahiawa Hongwanji, its goals, and memories of our families, and friends.

In gassho (gratitude),

A handwritten signature in black ink, appearing to read "Rodney S. Moriyama". The signature is fluid and cursive, written in a professional style.

Rodney S. Moriyama, President

Antiques, Treasures and Treats (AT&T)

Save the Date November 27 - 28

We are planning an AT&T sale on November 27 - 28 from 9:00 - 11:30 am so please save the dates. You'll never know what you might find at the sale for yourself and/or for gifts.



If you are able to volunteer during the sale and/or with donating treats, please call the WHM office at (808) 622-4320

(Remember that you must include the 808 when dialing as of 10/24/21). We are accepting donations of homemade treats such as snack mixes (party mix, muddy buddies, pretzel mix), brownies, dessert bars (lemon bars, nut bars, fruit bars), mochi, cookies or other treats packed in baggies ready to sell.



Food Drive

By Carolyn Uchiyama

Wahiawa Hongwanji held their monthly Food Drive on October 3, 2021. As the COVID-19 pandemic continues, this effort to help our neighbors in Wahiawa truly aids those who have fallen on difficult times.



We are grateful to our faithful members who contribute to this Food Drive effort. This month we collected **152** items of noodles, spaghetti sauce, cereal, and canned goods. We collected **55** pounds of rice that will help to feed many families.

We will continue to collect food items on the first Sunday of the month.

Thank you for following the first of the Six Paramitas, which is Dana.

Through these many months, your willingness to share by thinking of others less fortunate than you is Dana in action.

White Way Radio Program

White Way is a public service radio program of Moiliili Hongwanji. The programs are on KZOO every Saturday for 15-minutes from 7:45am-8:00am. Guest speakers are ministers from the state and abroad, as well as lay speakers who have an interest in Buddhism. You can also go to: www.moiliilihongwanji.org for past Dharma messages.



Speakers for November 2021 are:

11/6 Rev. Alan Urasaki

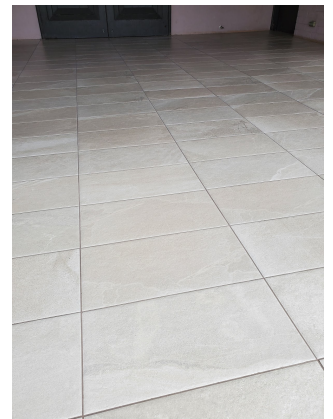
11/13 Rev. Shindo Nishiyama

11/20 Rev. Daido Baba

11/27 Rev. Joshin Kamuro

Retiling Project Completed!

Hosha noticed that the tile on the temple's front lanai was lifting, buckling and becoming a safety hazard. Before anyone could trip or fall, Hosha quickly removed the old tile. The replacement of the old tile with new textured tile was completed just in time for our rainy season. Come see our new and improved entry!



Wahiawa Hongwanji Mission Office Hours: By appointment 808-622-4320

Columbarium Hours: Daily 10:00am - 3:00pm

We are looking for people to help clean the columbarium on a weekly basis so families may resume bringing flowers to the columbarium. Please call the temple office (622-4320 or 392-3253) if you are able to help.

IMPORTANT COLUMBARIUM NOTICE

We have received a request from a temple member whose family will be willing to return in a week to remove flowers they bring and clean any resulting mess.

We, too, would love to see flowers in our columbarium once again. However, in order for that to happen, everyone wishing to bring flowers for their loved ones must also be willing to come back in a week's time to remove their flowers and clean up their own areas. Water left over a week begins to smell and petals and leaves begin to fall, leaving a mess and sometimes stains on the floors.

If there are others also interested and willing to do the same, kindly call the office. If there are enough interested people, the Board may decide to honor this request for as long as it is working.

The flowers you bring would need to be the type that will remain fresh for at least a week. And remember that the clean-up includes washing out used vases, returning them back to the shelves and leaving the sink area tidy for the next user.

Feel free to call the office (808-622-4320) with any questions.



