



The Messenger

Building Healthy Sanghas: Embracing Generosity & Openness

Calendar of Events

January 2021

- 01 Fri New Year's Day
- 03 Sun 8:30am-9:30am Food Drive
- 03 Sun 9:00am Online Dharma Message by Rev. Hashimoto
- 03 Sun 10:00am Online Installation of Kyodan Officers
- 10 Sun 9:00am Online Dharma Message by Rev. Hashimoto
- 17 Sun 9:00am Online Dharma Message by Rev. Hashimoto
- 17 Sun 11:00pm Online Executive Board Meeting
- 24 Sun Online Hoonko Service by Rev. Hashimoto on Zoom (see website for link)
- 31 Sun 9:00am Online Dharma Message by Rev. Hashimoto



February 2021

- 07 Sun 9:00-10:00am Food Drive
- 07 Sun 9:00am Online Dharma Message by Rev. Hashimoto
- 14 9:00am Sun 9:00am Online Dharma Message by Rev. Hashimoto
- 21 9:00am Online Pet Memorial Service by Rev. Hashimoto on Zoom (see website for link)
- 28 9:00am Sun 9:00am Online Dharma Message by Rev. Hashimoto

Online Dharma Messages and Services

Links to weekly online Sunday Dharma Messages can be found at our website <https://www.wahiawashinbuddhists.org/> or you can view them on YouTube at your convenience. These Dharma messages are given by Rev. Hashimoto and Honpa Hongwanji of Hawaii ministers throughout the state each Sunday.

In addition, Wahiawa Hongwanji Mission is also offering major, important and special services online.



Please check our calendar of events and our website for links to these services. If you have any questions, please call the temple office at (808) 622-4320.



WHM Virtual Ho-onko Service January 24th 9:00 AM on Zoom

Please join us on Zoom for a memorial service honoring the founder of Jodo Shinshu, Shinran Shonin. Please see our website, <https://www.wahiawashinbuddhists.org/> for the Zoom link for this service.

Minister's Message

A Happy New Year!

This is the eighth time for my family and I to celebrate the New Year at Wahiawa. Through your help and support, we are having a great time and we really appreciate your support. **Arigato Gozaimasu.**

The Hawaii Kyodan's slogan for five years was **"Building Healthy Sanga"** and 2021's theme is **"Nurturing Empathy and Respect."**

My wife and I got married in Kagoshima 22 years ago. We were so young, so we often argued. Then, I was always worrying about our future life, but I just remembered when Shinran Shonin decided to be a Honen Shonin's disciple at a hexagonal building in Kyoto.

One day, he meditated in the hexagonal building and he dreamed that Kannon Bodhisattva appeared and said, "I will become your wife in the future." At that time, it was a taboo for a Monk or Minister to marry, but Shinran Shonin believed what Kannon Bodhisattva said and decided to marry Eshinni-sama. He had always thought of Eshinni-sama as Kannon Bodhisattva and Eshinni-sama had thought Shinran Shonin as Kannon Bodhisattva, too which means they respected each other as Bodhisattva.

It is easy to say that we should respect each other, but how should we do that? The key is Shinran Shonin and Eshinni-sama's thought. If we think other people are our Buddha or Bodhisattva, we can respect each other with our palms together.

2020 was a hard and struggling year, but we could learn many important things which we would not normally have experienced. Hopefully, this is a better year than last year and keep listening to the Nembutsu teachings. I will try to remember that my wife is my Bodhisattva as Shinran Shonin believed.

In Gassho,
Rev. Kojun, Takako, Kano, and Shoshi



Wahiawa Hongwanji Mission Office Hours: By appointment 808-622-4320
NEW Columbarium Hours: Daily 10:00am - 3:00pm

President: Rod Moriyama

Minister: Reverend Kojun Hashimoto

Vice Presidents (alphabetically): Karen Pang
Dale Shimaura
Carolyn Uchiyama

Secretary: Amy Kanemaru

Treasurer: Alan Kakazu

President's Report

2020 will go down in history as truly a pivotal year for the world as we faced a pandemic that impacted millions of people and caused countless fatalities even today. Despite these challenges, we enjoyed your consistent support throughout the year in participating in a totally new way. I am confident that this boundless practice of gratitude will continue to sustain us in the months to come as we gain better control of the situation.



Our Gojikai (membership) dues only covers about 20% of our annual operating costs. In reality, our dues amount (\$175) is less than what we are assessed per member to Honpa Hongwanji Headquarters. Subsequently, rental income, fundraisers, special services, and key festivals are an important part of our revenue. In 2020, through your generous contributions, we were able to endure this year with our major services being conducted virtually, and most of our activities closed. The entire way services are delivered has dramatically changed and for many, for the better. For instance, our Nembutsu Seminars and Summer Sessions have had record numbers in attendance. Our virtual Bon Dance has had over 2500 views with people sharing the Wahiawa experience all over the world!

2021 will be another year of trying to anticipate exactly when services can be resumed. In the meantime, we will continue having small fundraisers to get by. As an additional buffer, we have depended on our investments like the Eitaikyo Endowment Fund, to build a solid base of alternative income for use in emergencies. Our investment has grown to surpass \$200,000, very much on track with our ten-year goal of \$1 million by 2029.

If we can be of assistance in the months to come, please contact us and know that we are part of a larger family. On behalf of the Board of Trustees, we appreciate your continued support and look forward to a much more positive year!

In gassho (gratitude),

A handwritten signature in black ink that reads "Rodney S. Moriyama".

Rodney S. Moriyama, President



As We End Year 2020

By Dale Shimauro

We wish to thank all of you who have participated and made such generous donations toward our fundraising campaigns. Results of the last two fundraisers for the year were extremely successful.

We wish to thank Annette Kakazu for spear-heading

the Christmas Stocking sale and Karen Pang for organizing the Kahala Mall "Very Merry Event" fundraiser.

Though closed during this pandemic, we continue to receive monthly bills for water, electricity, and other expenses related to the maintenance and upkeep of the temple and grounds. Your donations help us to cover these costs.

No one knows how much longer this situation will exist, so we must carry on our efforts of finding other means of income. And to this end, we will look toward your continued support.

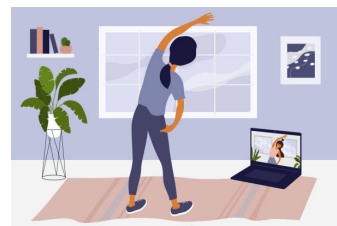
Please stay safe, be well and never hesitate to call the temple office at 622-4320 or 392-3253 for any questions or help that you might need.



Want Your Body and Brain to be Healthier in 2021?

- Boost your energy and help your immunity the natural and healthy way.
- Improve your balance and flexibility to reduce the chances of falling.
- Learn relaxation and breathing techniques to relieve stress.

Try yoga in the comfort of your home via Zoom every Wednesday at 9:20am. For additional information, call the WHM office at 622-4320.



Wahiawa Kendo Club's Zippy's Ticket Sale

By Dale Shimaura

Wahiawa Kendo Club's Zippy's Ticket Sale Fundraiser is in the middle of its course. It is hard during this COVID-19 pandemic, however, everyone is pitching in as usual.

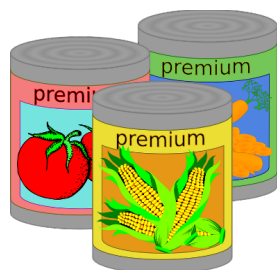
If you are interested in helping the club by purchasing either Zippy's Famous Chili (1-1/2 lbs), Portuguese Bean Soup (1-1/2 lbs) or Meat Sauce (1-1/2 lbs), contact any kendo club member or call the WHM temple office at 622-4320. Tickets are \$9.00 each; expires 1/10/2021.



Although currently on break until safer times, the Wahiawa Kendo Club practices each week at the WHM Social Hall from 6:00pm. Contact Instructor Sato-Sensei at: isato@hawaii.rr.com.

Sharing with Our Wahiawa

By Carolyn Uchiyama



A big MAHALO to the donors to our last Food Drive on December 6. We collected **322** items of canned goods, spaghetti, cereal, and soymilk. To top it off we gathered **60** pounds of rice. That will certainly fill many mouths for the St. Stephen's drive through and food pick-up every 2nd and 4th Wednesdays and some of you may have seen the long lines of cars waiting for the pick-up.

Our donors continue to scan the sales at Longs and visit Costco to purchase the canned goods at a good price. Your thoughtfulness is greatly appreciated by everyone in Our Wahiawa.

Our next Food Drive will be on January 3, 2021 at 9:00 am. with the assistance of the young people of Dharma Shaka – Jay and Tre Acohido, Kano and Shoshi Hashimoto, and Thomas and May Kanemaru. Thank you, Amy Kanemaru for corralling the young people to assist in this community endeavor.

Everyone Hauoli Makahiki Ho!

WHM On-Going Clothing Drive Fundraiser

By Dale Shimaura

Thank-you to all who have been using this “down-time” to do “Spring cleaning,” and then contributing all of your clothing, shoes, purses, towels, linen, bed spreads, blankets, jackets, curtains, etc. to our Clothing Drive Fundraiser. To the others who are still doing those 1,000-piece puzzles, we still have lots of space for your gently used items when you finally get around to house-cleaning! We especially appreciate those heavy items as we will be paid by weight.

Leave your tied bags of clothing under the tables in front of the Columbarium. Please put your name/phone number on a piece of paper in one of your bags.

Thank you in advance!

